

**SPS 25000**

**PALFINGER**

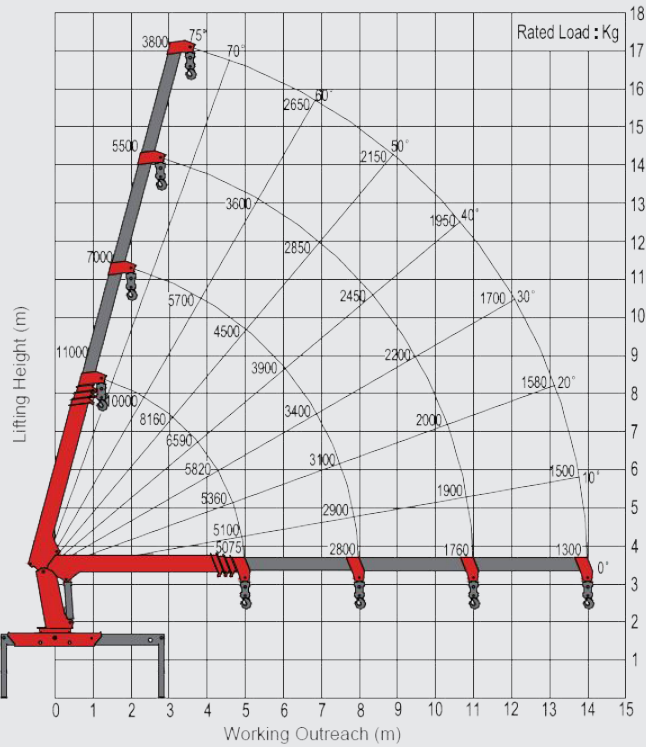
LIFETIME EXCELLENCE

**PALFINGER ASIA PACIFIC  
STIFF BOOM CRANES**



# SPS 25000

## B (3 BOOMS)

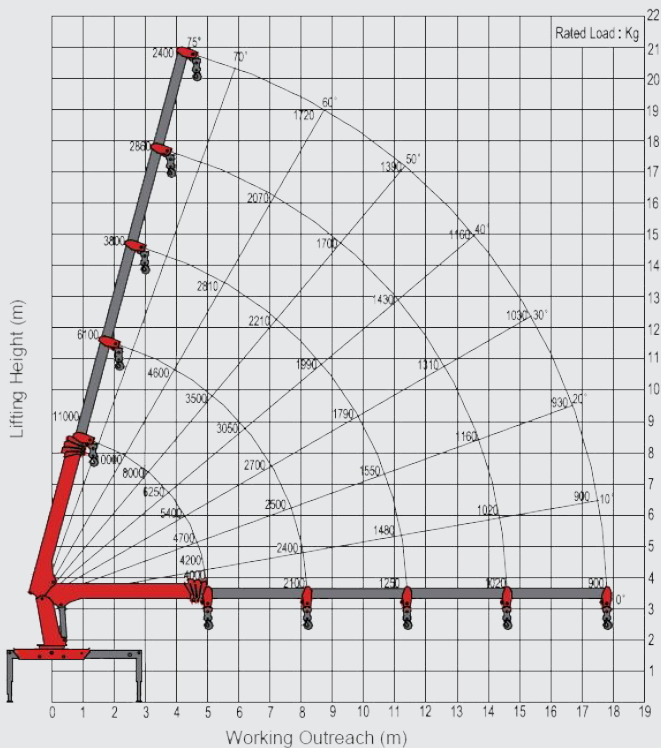


## LIFTING CAPACITY

### SPS 25000 (B)

Working radius	Boom length			
	5.3 m	8.3 m	11.3 m	14.3 m
2 m	11000			
2.5 m	10000	7000		
3	8700	6800	5600	
3.5 m	7500	6400	5450	4200
4 m	6600	5700	5000	4000
4.5 m	5900	5000	4550	3800
5 m		4500	4000	3500
5.5 m		4100	3600	3200
6 m		3900	3400	3000
6.5 m		3500	3100	2800
7 m		3400	2850	2650
7.5 m		3100	2700	2500
8 m			2600	2400
8.5 m			2450	2250
9 m			2300	2150
9.5 m			2200	2050
10 m			2100	2000
10.5 m			2000	1900
11 m				1850
11.5 m				1750
12 m				1700
12.5 m				1650
13 m				1600
13.5 m				1550
14 m				1300
Recommended Rope lines	6	6	4	4

## C (4 BOOMS)



## LIFTING CAPACITY

### SPS 25000 (C)

Working radius	Boom length				
	5.3 m	8.5 m	11.7 m	14.9 m	18.1 m
2 m	11000				
2.5 m	10000	6100			
3 m	8000	5700	5200		
3.5 m	6700	5200	4800	4000	
4 m	5800	4600	4400	3700	
4.5 m	4400	4200	3800	3500	2800
5 m		3800	3500	3000	2600
5.5 m		3200	3000	2700	2500
6 m		3100	2750	2400	2200
6.5 m		3000	2550	2200	2000
7 m		2800	2400	2100	1900
7.5 m		2600	2200	2000	1800
8 m		2400	2000	1800	1600
8.5 m			1820	1700	1500
9 m			1720	1600	1400
9.5 m			1600	1500	1300
10 m			1500	1400	1200
10.5 m			1420	1220	1050
11 m			1320	1160	950
11.5 m			1250	1100	900
12 m				1040	850
12.5 m				970	800
13 m				900	750
13.5 m				850	700
14 m				800	650
14.5 m				750	600
15 m					570
15.5 m					540
16 m					510
16.5 m					480
17 m					450
17.7 m					420
Recommended Rope lines	6	6	4	2	2

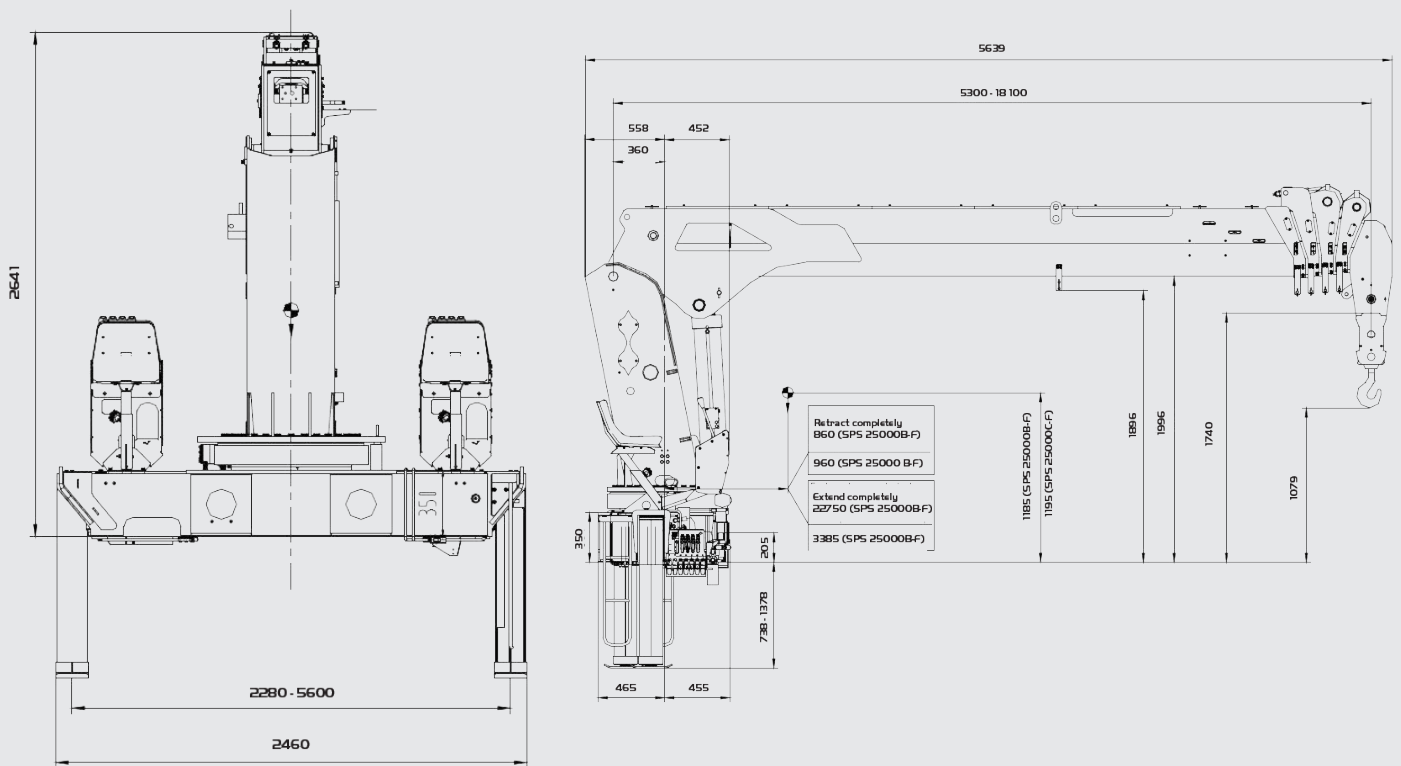


- Longer boom variant for wider working areas and lifting height
- Strong lifting performance
- Proportional control valve for smooth contraility and high operating efficiency
- Higher transport capacity due to lighter crane structure
- Manufactured with European quality processes to ensure safety and reliability
- Suitable for installation on 3 axles trucks
- High Density (HD) Paint system provides better resale value retention and attractive aesthetics.

Model		SPS 25000 B-F	SPS 25000 C-F
Max. lifting moment	mt	25.0	25.0
Max. lifting capacity	kg/m	10000/2.5	10000/2.5
Number of booms	sections	4	5
Max. hydraulic outreach	m	14.0	17.7
Max. lifting angle	°	75	75
Slewing angle	°	Endless	Endless
Stabilizer spread (std.)	mm	5600	5600
Operating pressure	MPa	27/34	27/34
Recommended pump capacity	L/min	70	70
Oil tank capacity	L	200	200
Crane Weight	kg	3820	4110



## DIMENSIONS



## PALFINGER ASIA PACIFIC PTE LTD

3 INTERNATIONAL BUSINESS PARK | NORDIC EUROPEAN CENTRE  
 # 05-25/26 | 609927 | SINGAPORE  
 T +65 6591 9191 | F +65 6591 7737  
 Enquiries: [asia@palfinger.com](mailto:asia@palfinger.com)  
 Website: [www.palfinger.com](http://www.palfinger.com)

