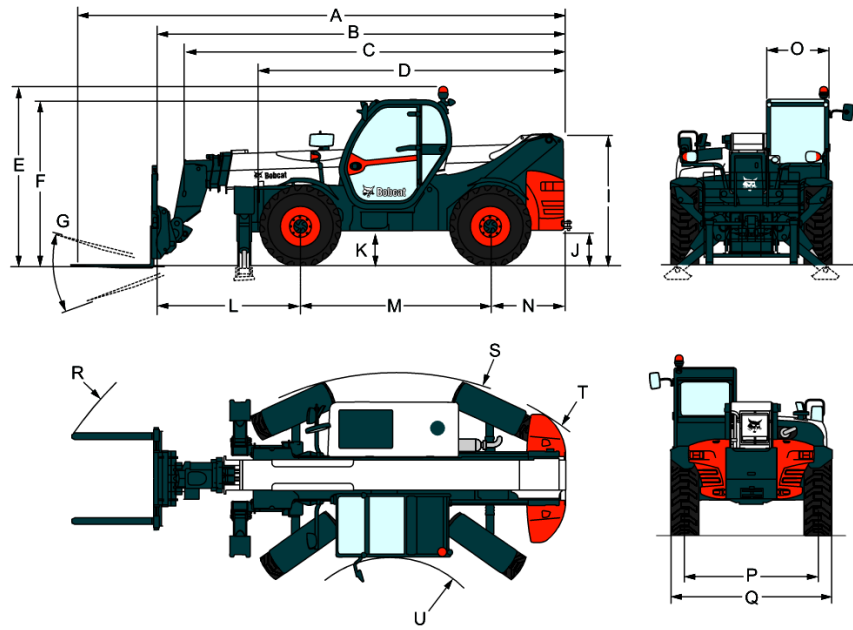


Dimensions



(A) Overall length (with forks)	7425.0 mm
(B) Overall length (with carriage)	6164.0 mm
(E) Overall height (with rotating beacon)	2670.0 mm
(F) Overall height	2476.0 mm
(G) Carriage rotation angle	124°
(J) Ground clearance	500.0 mm
(M) Wheelbase	2850.0 mm
(O) Operator cab outside width	930.0 mm
(P) Track width (front & rear)	1992.0 mm
(Q) Width over standard tyres	2394.0 mm
(R) External turning radius (with forks)	5822.0 mm
(S) External turning radius (at tyres)	3782.0 mm
(U) Internal turning radius	1761.0 mm
(-) Carriage crowding angle	16°
(-) Carriage tilting angle	109°

Performance

Crowding force	4900 daN
Drawbar pull	4900 daN
Rated capacity	4000 kg
Capacity (at max. height on stabilisers)	2500 kg
Capacity (at max. height on tyres)	1000 kg
Capacity (at max. reach on stabilisers)	560 kg
Capacity (at max. reach on tyres)	0 kg
Lifting height — on stabilisers	17500.0 mm
Lifting height — on tyres	16200.0 mm
Max. reach on stabilisers	13700.0 mm
Max. reach on tyres	12800.0 mm
Banking corrector	4°
Sideshift (max.)	1400.0 mm

Cycle Times

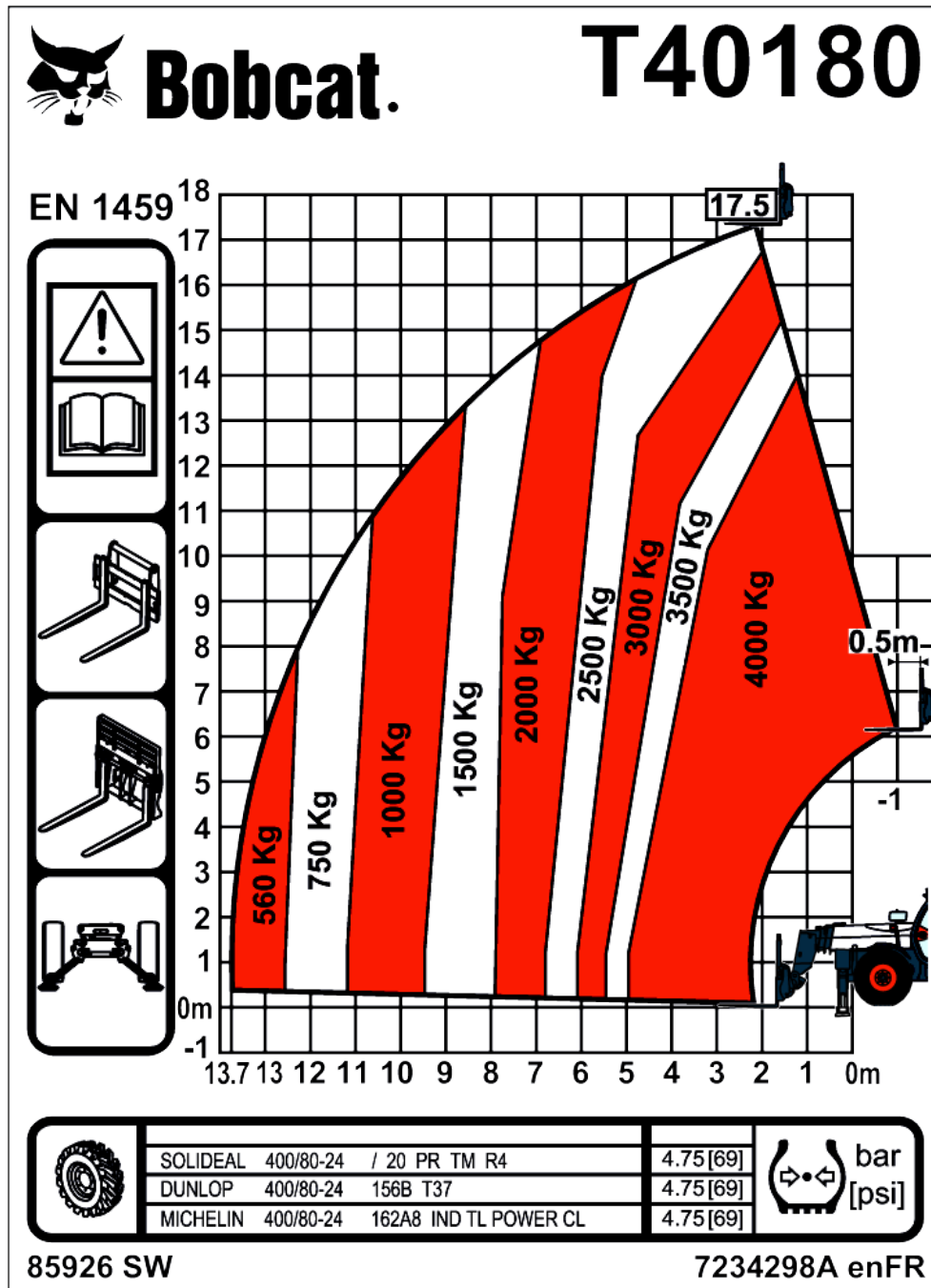
Lift time - no load	12.8 s
Lift time - full load	15.3 s
Lower time - no load	8.4 s
Lower time - full load	7.8 s
Telescope in time at max. reach - no load	20.3 s
Telescope in time at max. height - no load	17.7 s
Telescope in time at max. reach - full load	19.8 s
Telescope in time at max. height - full load	18.0 s
Telescope out time at max. reach - no load	29.0 s
Telescope out time at max. height - no load	29.0 s
Telescope out time at max. reach - full load	29.4 s
Telescope out time at max. height - full load	30.1 s
Crowding time	4.7 s
Dumping time	4.6 s

Weights

Weight (unladen)	10790 kg
Front axle weight unladen	4130 kg
Rear axle weight unladen	6660 kg
Total weight with pallet frame and forks	11105 kg
Front axle weight with pallet frame and forks	4710 kg
Rear axle weight with pallet frame and forks	6395 kg
Weight with pallet frame, forks and 3500 kg load	15105 kg
Front axle weight with pallet frame, forks and 3500 kg load	12715 kg
Rear axle weight with pallet frame, forks and 3500 kg load	2390 kg

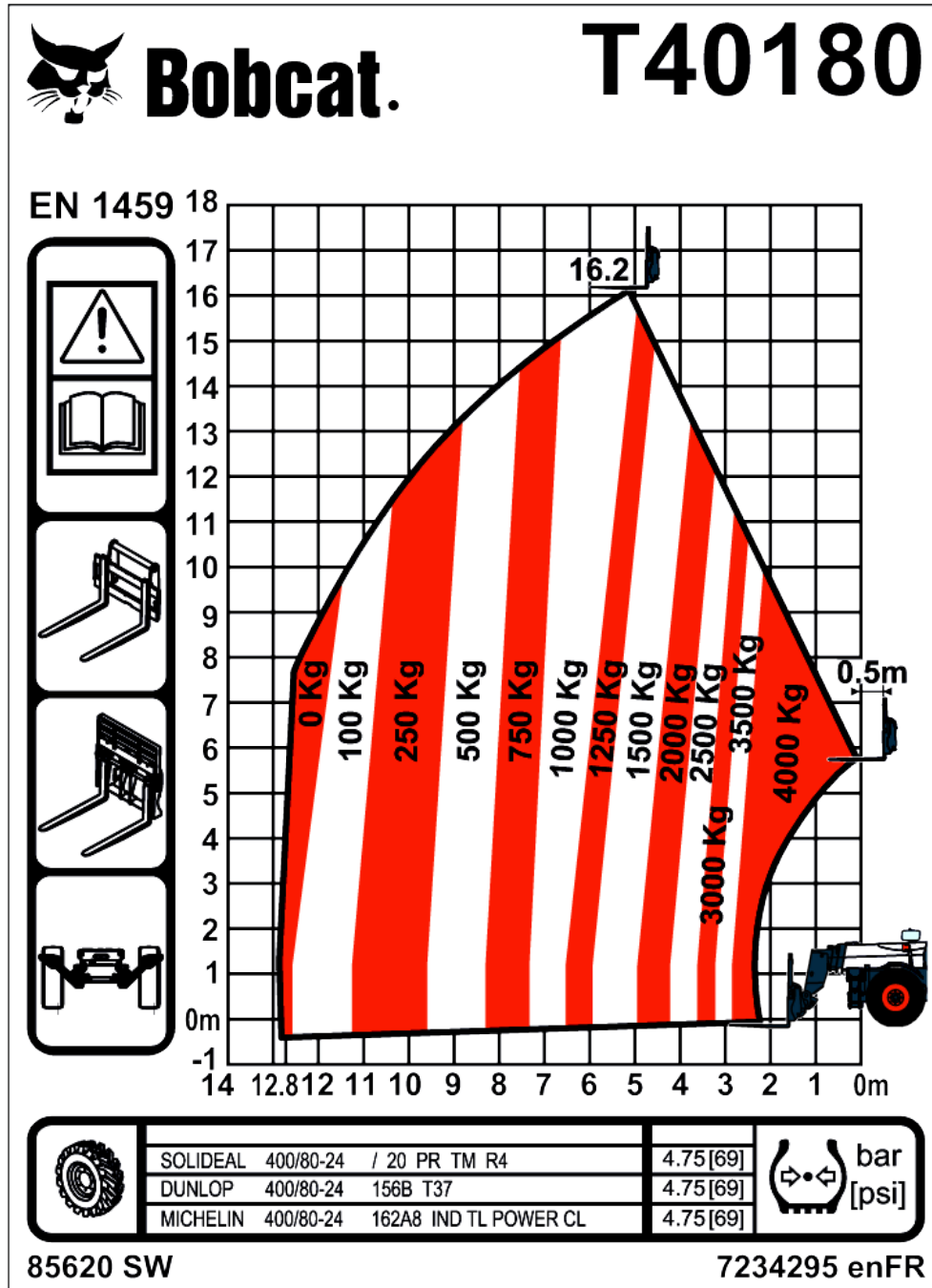
Load Charts

With forks and standard 400/80x24 tyres, on stabilisers



Complies with stability test EN1459 Ennex B

With forks and standard 400/80x24 tyres



Complies with stability test EN1459 Ennex B

Engine

Make / Model	DEUTZ / TCD 3.6 L4
Fuel	Diesel
Cooling	Liquid
Rated power (ISO 14396) at 2300 RPM	100.0 HP
Rated power (ISO 14396) at 2300 RPM	74.4 kW
Rated speed	2300.0 RPM
Maximum torque at 1600 RPM	410.0 Nm
Number of cylinders	4
Displacement	3.62 L
Bore	98.0 mm
Stroke	120.0 mm
Consumption	Gear pump pressure
Crankshaft ventilation	Closed breathing
Air filter	Dry replaceable cartridge with safety element
Ignition	Diesel compression

Electrical

Alternator	90 A
Battery	110 Ah
Starter	3.2 kW

Hydraulic System

Pump type	Gear pump with LS valve
Pump capacity	100.00 L/min
Combined pump capacity	100.00 L/min
Relief valve pressure setting	255.00 bar
Control valve	Open center with flow compensator on boom, tilt and extension section
Hydraulic filter	Full flow filtration
Auxiliary flow	65.00 L/min

Drive System

Transmission	Hydrostatic with electronic regulation
Main drive	Hydrostatic motor

Traction

Standard tyres	400/80x24
Optional tyres	MICHELIN 400/80-24 162A8 IND TL POWER CL
Tyre pressures	4.25 bar
Low speed (forward/reverse)	8.5 km/h
High speed (forward/reverse)	30.0 km/h
Driving modes	Direct drive / soft drive

Brakes

Engine braking	Hydrostatic
Parking and emergency brake	Negative brake with hydraulic command
Service brake	Oil-immersed disk

Steering

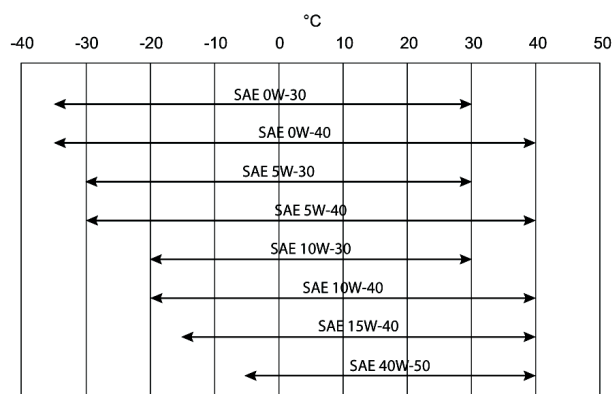
Steering pump	Priority valve on pump
Steering modes	2WS / 4WS / CRAB
External turning radius (with forks)	5748.0 mm

Fluid Capacities

Axles and reduction gears front / rear	9.1/9.1 L
Cooling system	18.00 L
Engine lubrication plus oil filter	8.00 L
Fuel tank	145.00 L
Hydraulic reservoir [HYDRAULIC]	76.00 L
Hydraulic system plus reservoir	140.00 L
Gear Box	0.80 L

Fluid Specifications

Coolant	Bobcat EG Coolant 5 L can - 6987804A 25 L container - 6987804B 209 L drum - 6987804C 1000 L tank - 6987804D
Engine oil	



Fuel	Diesel
Brake fluid	None. Braking on hydraulic system pressure
Hydraulic fluid	Bobcat Superior SH 5 L can - 6987791A 25 L container - 6987791B 209 L drum - 6987791C 1000 L tank - 6987791D
Transmission oil	Bobcat Axle Transmission Oil SAE80W90 LS 5 L can - 6987805A 25 L container - 6987805B 209 L drum - 6987805C 1000 L tank - 6987805D
Grease for hinges and boom gliders	Bobcat MP Grease - 6987888
Grease for boom telescoping chains	

Controls

Engine	Foot accelerator pedal
Starting	Key-type starter switch and shutdown. Key-activated air intake heater.
Front auxiliary	Variable thumbwheel on joystick
Hydraulics lift and tilt	Electronic joystick
Hydraulics telescope in and telescope out	Variable thumbwheel on joystick
Service brake	Pedal-activated wet multi-disk on front axle
Secondary brake	Hand lever activates spring-applied pressure release disk brake
Parking brake	Hand lever activates spring-applied pressure release disk brake
Steering	Proportional hydraulic steering via a conventional steering wheel
4WS/2WS/parallel drive selection	Three-position switch on the right-hand console
Auxiliary pressure release	Standard coupler + pressure release on control valve spool

Instrumentation

The following functions are monitored by a combination of gauges and warning lights in the operator's line of sight. The system alerts the operator of monitored malfunctions by way of audible and visual indicators.

- Gauges
 - Engine coolant temperature gauge
 - Hour meter
 - Tachometer (RPM)
 - Fuel level gauge
 - Boom angle
 - Job hours
 - Frame leveling angle
- Indicators
 - Front wheel alignment
 - Rear wheel alignment
 - Stabilizers lowered correctly
 - Headlight full beam
 - Headlight low beam
 - Position lights
 - Direction signal indicator
 - Trailer turn indicators
 - Parking brake
 - Longitudinal stability indicator
 - Windscreen wipers
 - Work lights
 - Warning lights
 - Hazard warning lights
 - Hydraulic function lock
 - Rear fog lights
- Warning lights
 - Hydraulic oil temperature
 - Engine coolant temperature
 - Engine oil pressure
 - System voltage
 - Longitudinal stability indicator alarm active

Serviceability

Access is available to the following through the side engine cover and access panel:

- Air cleaner
- Fuel filter
- Engine oil filter
- Engine oil dipstick
- Starter
- Alternator

Other accesses:

Access is available to the following within the cab:

- Fuses, diodes and relays
- ISL control box

Engine cover has a lock for vandal-proofing and is equipped to hold open while servicing

Easy access to all grease points

Standard Features

- Aggravating Movements Arrester (AMA)
- Hydrostatic transmission
- ROPS/FOPS operator cab
- Heating, demisting and ventilation
- Front and rear washer/wipers
- Suspension seat
- Road lights
- Turn signals
- Right and left side mirrors
- Two way hydraulic supply at the end of the boom
- Mudguards
- Turbo-charged engine - Deutz 3B
- Narrow hook-up for mounting of the equipment
- Mechanical lock of the equipment
- Four 400/80x24 tyres
- Transmission lock override

Options

- Air conditioning
- Air suspension seat
- Auxiliary line on boom with ACD and electric connectors
- Back up alarm
- Basic tow hitch
- Boom stop
- Carriage with hydraulic attachment lock
- Cold start
- Custom colour
- Cyclonic air prefilter
- Double right rear view mirror
- Drawbar coupler tow hitch
- Fan inverter
- Fire extinguisher
- Lockable fuel cap
- Man platform predisposition
- Multifunctional remote control

- No forward/reverse control on joystick
- Pintle tow hitch
- Radio ready
- Rear electric auxiliary
- Rear flat mirror
- Roof window wiper
- Rotating beacon
- Sun visor
- Support for registration plate
- Windscreen grill
- Work light on boom
- Wheel wedge
- Winch ready

Attachments

- | | |
|--------------------|--------------------------|
| • Concrete Buckets | • Manplatforms |
| • Digging Buckets | • Pallet Forks, Standard |
| • Jibs | • Winches |

Environmental

Sound pressure level (LpA)	79 dB(A)
Level of acoustic power (LWA)	106 dB(A)
Whole body vibration (ISO 2631-1)	0.29 ms ⁻²

Safety

Seat belt, standard	Should always be worn when operating the machine
Fully enclosed operator cab. standard	
Boom stop, standard	Enclosed operator cab. Meets SAE-J1040 and ISO 3471 for Roll Over Protective Structure (ROPS) and SAE-J1043 and ISO 3449 for Falling Objects Protection Structure (FOPS).
Boom stop, optional	Use for servicing if boom is raised
Parking brake, standard	Use for servicing if boom is raised
Grab handles, standard	Always set brake when leaving the machine
Rear window, standard	Should always be used when entering/exiting the telescopic
Front and rear work lights, standard	For emergency exit
Back-up alarm, standard	Use for indoor and low light operation
Back-up alarm, optional	For use in jobs with low visibility. Alarm sounds when operated in reverse.
Rated load capacity charts, standard	For use in jobs with low visibility. Alarm sounds when operated in reverse.
Anti-tipping device, standard	Attached inside the cab. Provide rated load capacities for loads and attachments.
Emergency button, standard	Provides load limiting.
Operator handbook, standard	Switches off the engine and blocks boom movements.

Safety

Seat belt, standard
Fully enclosed operator cab. standard

Boom stop, optional
Parking brake, standard
Grab handles, standard

Rear window, standard
Front and rear work lights, standard
Back-up alarm, optional

Rated load capacity charts, standard

Anti-tipping device, standard
Emergency button, standard
Operator handbook, standard

Should always be worn when operating the machine
Enclosed operator cab. Meets SAE-J1040 and ISO 3471 for Roll Over Protective Structure (ROPS) and SAE-J1043 and ISO 3449 for Falling Objects Protection Structure (FOPS).

Use for servicing if boom is raised

Always set brake when leaving the machine

Should always be used when entering/exiting the telescopic

For emergency exit

Use for indoor and low light operation

For use in jobs with low visibility. Alarm sounds when operated in reverse.

Attached inside the cab. Provide rated load capacities for loads and attachments.

Provides load limiting.

Switches off the engine and blocks boom movements.