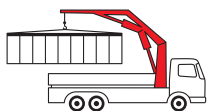


PK 30002

High Performance

PALFINGER CRANE

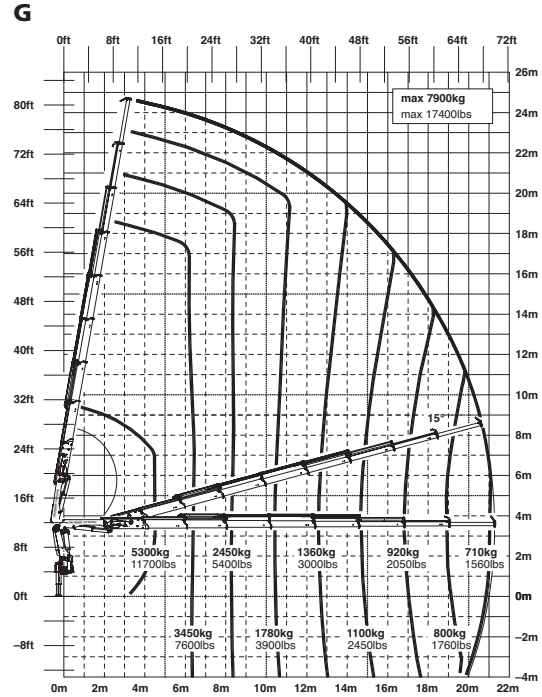
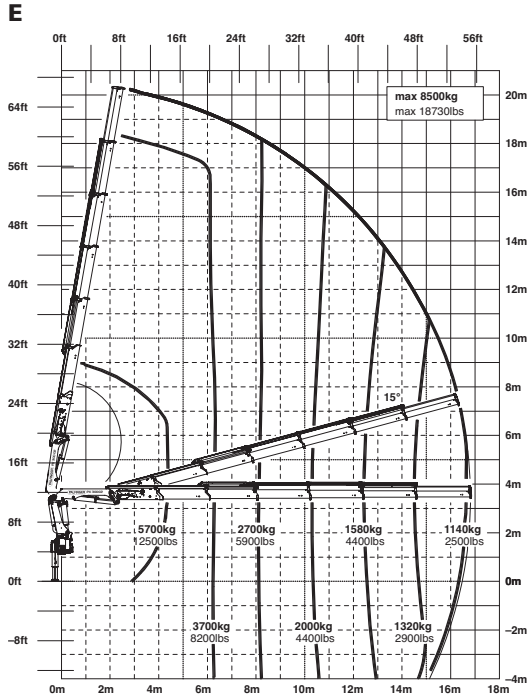


Superior movement geometry

The appeal of the PK 30002 lies in its flexible work range and high cost-effectiveness. Furnished with Power Link Plus, the crane demonstrates that it not only tackles tough tasks, but that it also overcomes difficult jobs due to its advantageous geometry. With its exceptional environmentally and maintenance friendly equipment, it unites ecology and economy. Its high cost-effectiveness makes it the perfect companion for anyone on the road to success.

Clean crane technology with reduced maintenance needs

PK 30002 High Performance



Technical Specifications (EN 12999 HC1 HD4/B3)

Max. lifting moment	28.0 mt/275.0 kNm	202810 ft.lbs
Max. lifting capacity	10000 kg/98.1 kN	22050 lbs
Max. hydraulic outreach	21.3 m	69' 11"
Max. manual outreach	23.3 m	76' 5"
Slewing angle	400 °	
Slewing torque	3.2 mt/31.4 kNm	23130 ft.lbs

Stabilizer spread	std. 5.6 m/18' 4"	max. 7.4 m/24' 3"
Fitting space required (std.)	1.01 m	3' 4"
Width folded	2.53 m	8' 3"
Max. operating pressure	320 bar	4640 psi
Recommended pump capacity	from 55 l/min to 80 l/min	14.5 US gal./min to 21.1 US gal./min
Dead weight (std.)	2876 kg	6340 lbs

