

PK 15500

Performance

PALFINGER



UNIT LOADS ARE ITS SPECIALITY



FOR THE PK 15500 *PERFORMANCE* FUNCTIONALITY IS IN THE FOREFRONT

The new PK 15500 *Performance* is the ideal crane for handling unit loads. It can lift light machinery and heavy structural components with ease. Thanks to years of practical experience and PALFINGER technical know-how it brings high efficiency to any job!



Return oil use

Use of the return oil in the extension system increases the operating speed by 30 per cent.



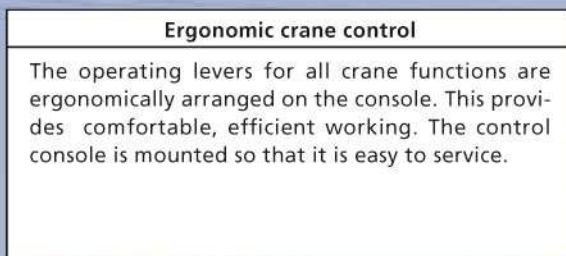
Load-holding valves

They prevent the crane arms from dropping and are fitted as standard on the elevating, arm and extension cylinder. The valves are positioned in such a way that they are protected from being damaged.



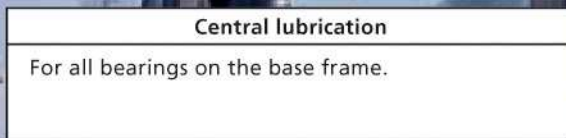
Ergonomic crane control

The operating levers for all crane functions are ergonomically arranged on the console. This provides comfortable, efficient working. The control console is mounted so that it is easy to service.



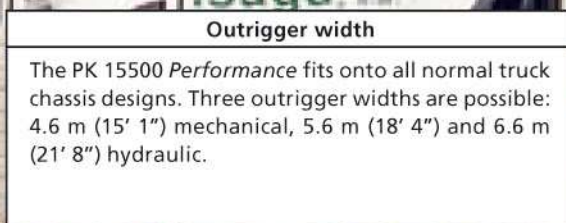
Central lubrication

For all bearings on the base frame.



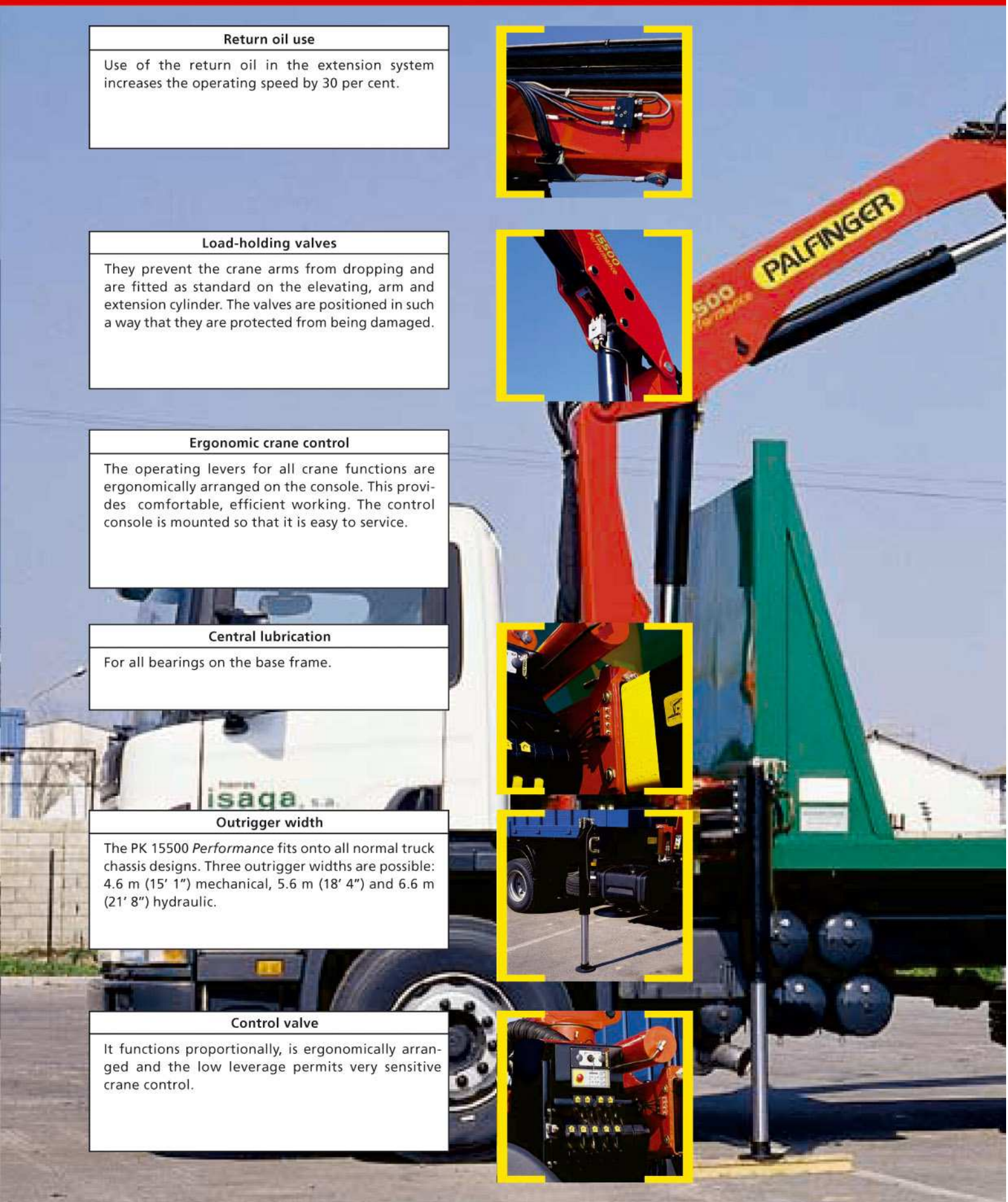
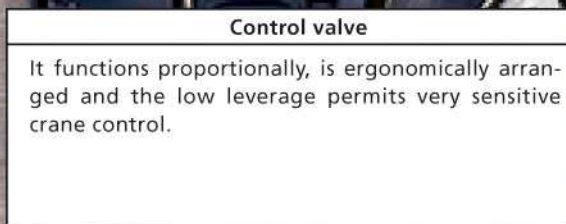
Outrigger width

The PK 15500 *Performance* fits onto all normal truck chassis designs. Three outrigger widths are possible: 4.6 m (15' 1") mechanical, 5.6 m (18' 4") and 6.6 m (21' 8") hydraulic.



Control valve

It functions proportionally, is ergonomically arranged and the low leverage permits very sensitive crane control.



DER PK 15500 *PERFORMANCE* IS WELL SUPPORTED BY MORE THAN 1400 PALFINGER CONTRACT PARTNERS WORLDWIDE



Adjustable slide blocks

Internally routed oil ducts

On the multiple extensions there are no hydraulic hoses between the cylinders. The internally routed oil passages make it possible to have a compact boom design.



Extension system

The extension cylinders are guided in Jordal rails over rollers.

Height compensation

Hose equipment for accessories

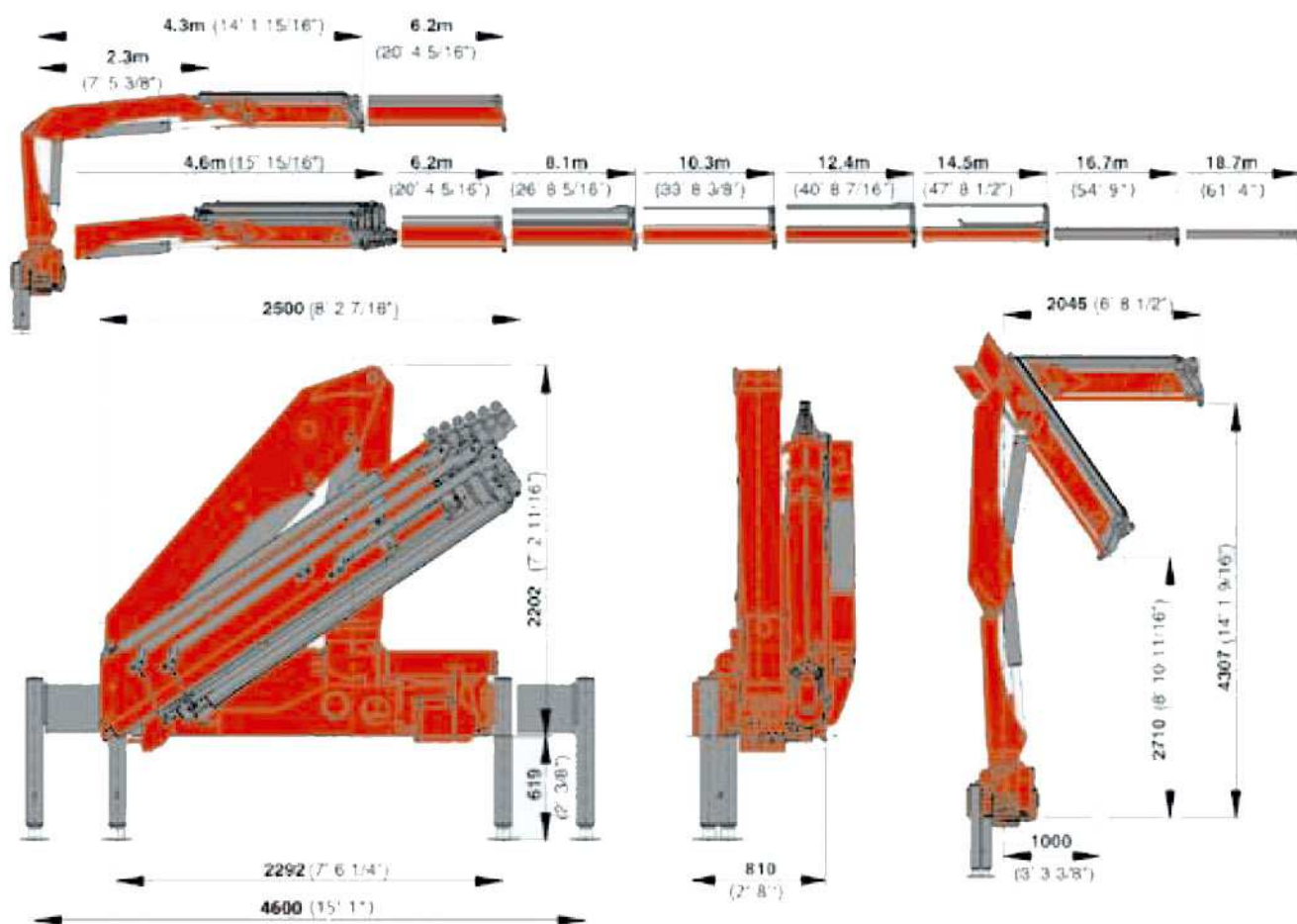
With this option you can provide the oil supply to accessories. The hoses are routed in compact troughs and plastic link chains. They are thus optimally protected.



Optional

- The PALFINGER radio control system with digital data transmission
- The PALTRONIC 50 electronic control system
- The hydraulic overload safety device
- Hose equipment for accessories

THE PK 15500 PERFORMANCE ALREADY MEETS THE REQUIREMENTS OF THE FUTURE EN 12999 CRANE STANDARD



PK 15500 Performance

Technical specifications (DIN 15018 H1-B3)

| | | |
|-------------------------|-------------------|---------------|
| Max. lifting moment | 14.6 mt/143.2 kNm | 105580 ft.lbs |
| Max. lifting capacity | 6200 kg/60.8 kN | 13670 lbs |
| Max. hydraulic outreach | 14.5 m | 47' 7" |
| Maximum outreach | 18.7 m | 61' 4" |
| Slewing angle | 420° | |

PK 15500 Performance

Standard crane

| | | |
|----------------------------------------------------|-----------------|-------------------------------------|
| Slewing torque | 1.8 mt/17.7 kNm | 13050 ft.lbs |
| Stabilizer spread standard | 4.6 m | 15' 1" |
| Stabilizer spread maximum | 6.6 m | 21' 8" |
| Fitting space required | 0.81 m | 2' 8" |
| Width folded | 2.5 m | 8' 2" |
| Operating pressure | 300 bar | 4350 psi |
| Recommended pump capacity | from 40 l/min. | 8.8 imp.gal./min. 10.6 US gal./min |
| by radio remote control and LS-System | to 60 l/min. | 13.2 imp.gal./min. 15.9 US gal./min |
| Dead weight (without mounting parts, pump and oil) | 1619 kg | 3570 lbs |

Executions shown in the leaflet are not always corresponding to standard execution.
Country-specific regulations are to be observed upon attachment.



THIS CRANE OFFERS THE HIGHEST LEVEL OF QUALITY, SAFETY AND RELIABILITY

Max. lifting capacities

| PK 15500 Performance | | | | |
|----------------------|---------|----------|-----------|--|
| hydraulic | | | | |
| Outreach | | Capacity | | |
| 2.3 m | 6200 kg | 7' 7" | 13670 lbs | |
| 4.5 m | 3260 kg | 14' 9" | 7190 lbs | |
| 6.1 m | 2380 kg | 20' 0" | 5250 lbs | |

| PK 15500 Performance A | | | | |
|------------------------|---------|----------|-----------|--|
| hydraulic | | | | |
| Outreach | | Capacity | | |
| 2.3 m | 6100 kg | 7' 7" | 13450 lbs | |
| 4.5 m | 3140 kg | 14' 9" | 6920 lbs | |
| 6.1 m | 2250 kg | 20' 0" | 4960 lbs | |
| 8.0 m | 1690 kg | 26' 3" | 3730 lbs | |

| PK 15500 Performance B | | | | |
|------------------------|---------|----------|-----------|--|
| hydraulic | | | | |
| Outreach | | Capacity | | |
| 2.0 m | 6000 kg | 6' 7" | 13230 lbs | |
| 4.5 m | 3040 kg | 14' 9" | 6700 lbs | |
| 6.1 m | 2140 kg | 20' 0" | 4720 lbs | |
| 8.0 m | 1570 kg | 26' 3" | 3460 lbs | |
| 10.1 m | 1230 kg | 33' 2" | 2710 lbs | |
| manual | | | | |
| 12.3 m | 930 kg | 40' 4" | 2050 lbs | |
| 14.4 m | 740 kg | 47' 3" | 1630 lbs | |
| 16.6 m | 600 kg | 54' 6" | 1320 lbs | |

| PK 15500 Performance C | | | | |
|------------------------|---------|----------|-----------|--|
| hydraulic | | | | |
| Outreach | | Capacity | | |
| 2.0 m | 5850 kg | 6' 7" | 12900 lbs | |
| 4.5 m | 2960 kg | 14' 9" | 6530 lbs | |
| 6.1 m | 2050 kg | 20' 0" | 4520 lbs | |
| 8.0 m | 1470 kg | 26' 3" | 3240 lbs | |
| 10.1 m | 1110 kg | 33' 2" | 2450 lbs | |
| 12.2 m | 910 kg | 40' 0" | 2010 lbs | |
| manual | | | | |
| 14.3 m | 710 kg | 46' 11" | 1570 lbs | |
| 16.5 m | 580 kg | 54' 2" | 1280 lbs | |
| 18.4 m | 480 kg | 60' 4" | 1060 lbs | |

| PK 15500 Performance D | | | | |
|------------------------|---------|----------|-----------|--|
| hydraulic | | | | |
| Outreach | | Capacity | | |
| 2.0 m | 5750 kg | 6' 7" | 12680 lbs | |
| 4.5 m | 2860 kg | 14' 9" | 6310 lbs | |
| 6.1 m | 1940 kg | 20' 0" | 4280 lbs | |
| 8.0 m | 1350 kg | 26' 3" | 2980 lbs | |
| 10.1 m | 990 kg | 33' 2" | 2180 lbs | |
| 12.2 m | 780 kg | 40' 0" | 1720 lbs | |
| 14.3 m | 650 kg | 46' 11" | 1430 lbs | |
| manual | | | | |
| 16.5 m | 520 kg | 54' 2" | 1150 lbs | |
| 18.4 m | 430 kg | 60' 4" | 950 lbs | |

The reaches are indicated for a 20° main boom position and are therefore not the maximum ones.

PK 15500 Performance

